

KEIRIN

Guide

Perfect for novices!
A rough guide to Keirin



A sport Japan
taught the world

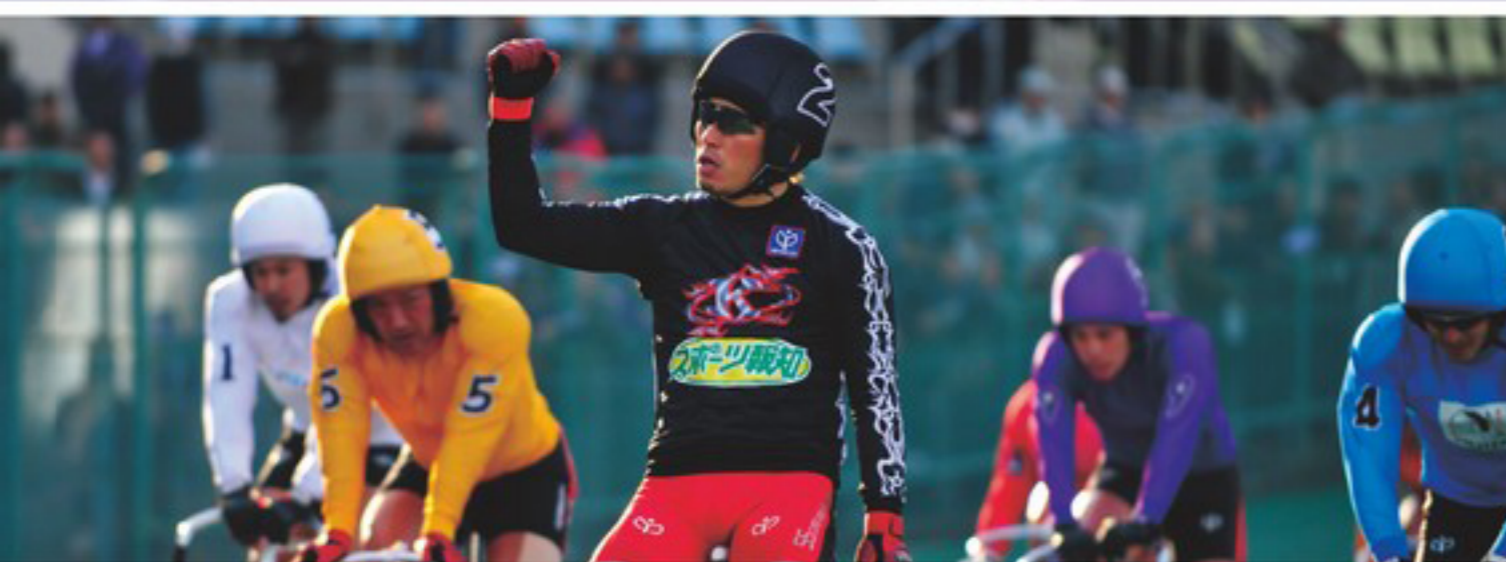
KEIRIN



Get to know Keirin!

Keirin is a
big-time sport worldwide!

In 1948, The first ever keirin race was held at Kokura Velodrome in Kyushu. The dynamic races at speeds of up to 70 kph (~45 mph) and the fun of predicting winners have long been enjoyed by many fans. It is now an official Olympic event, brought to the world by Japan. Hey, you, yes, you reading this Keirin Guide! You've taken your first step toward becoming a fan.



Contents

What is Keirin?	03
How the racing works	05
Types of races	07
Champions	09
Keirin Q&A	11
This is a velodrome!.....	13
The track the athletes race on	15
There are various types of betting tickets! ...	17
Let's learn how to read the odds!....	19
Filling out a mark sheet is also important!	21
What's Dokanto auto-betting?	23
This is what to look out for in Girl's Keirin! ...	25
Get to know Girl's Keirin!	27
Velodromes across the country	29
Off track betting facilities	33
A sport Japan taught the world	34

What is Keirin?

Get to know the uniforms!

The riders' uniforms and helmets are assigned a different color for each bicycle number. They aren't just for a colorful attraction but so one can easily follow the racers' positions during a race. First, let's learn the numbers and colors.

Uniform

	9-rider lineup	7-rider lineup
Bracket 1		
Bracket 2		
Bracket 3		
Bracket 4		
Bracket 5		
Bracket 6		

Brackets are not available for 7-rider races such as A-grade challenge keirin or Girl's keirin.

Pacer
Not for betting, the purpose of the pacer is to act as a wind break and set the pace.

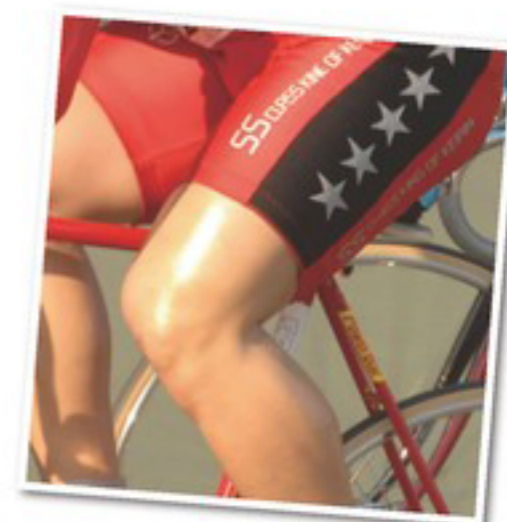
*Brackets available even when a rider fails to participate, making it a 7- or 8-rider lineup.

Rider's shorts

Riders are divided into 6 classes according to their standing (S-class groups S, 1, and 2, A-class groups 1, 2, and 3). Within these classes only 9 elite riders are chosen for S-class group S. Not just anyone gets to wear the red racing shorts.

Number of riders by class and group as of 1 June 2012

	Class	Group	Riders
Men	S-Class	Group S	9
		Group 1	261
		Group 2	527
Women	A-Class	Group 1	790
		Group 2	773
		Group 3	674
Total			3,067



Racing shorts



How the racing works

⊗ Get to know how a race is run!

Keirin is an elimination-style tournament. In order to make it to the final race on the last day, riders must keep their focus through each day's struggle.

START

Keirin races are 3 or 4 laps on a 500m banked track, 4 or 5 laps on a 400m banked track, or 5 or 6 laps on a 333.3m (335m) banked track. The riders line up at the starting line and set out in unison at the starting gun. They start off pedaling slowly.



Laps

During laps, riders from the same region form lines behind the pace-setter ("pacer") while developing a strategy and jockeying for a good position.



2 to 1 laps remaining

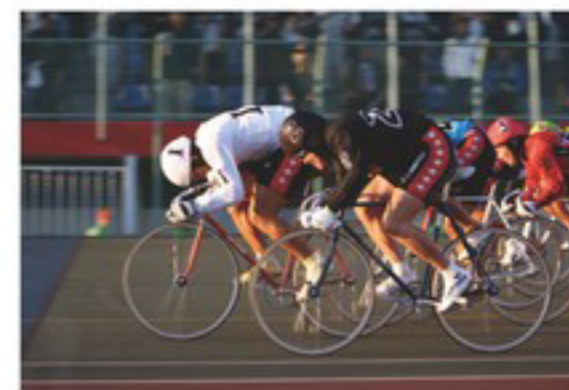
When there are one and a half laps remaining, a bell rings and the race speeds up dramatically.



GOAL!

Straightaway

After rounding the last corner, this is the final push for the goal! Speeds reach 70 kph (45mph)!



Half a lap remaining

This is the most exciting part of the race. Each rider uses their own special tactic.



Bell



Types of races

Major races and priority qualification.

*Priority qualification is the right to take precedence for participation in other GI/GII races, given to a rider with high GII standings.



A graded race system with the Grand Prix at the top. The competition takes place over the course of a year.

Grade System

GP

● KEIRIN Gran Prix Single Race

The championship purse is ¥100 million. In this largest Keirin race, held every 30 December, 9 riders (GI champions and top money winners) compete, as the name suggests, to become the year's No. 1.

GI

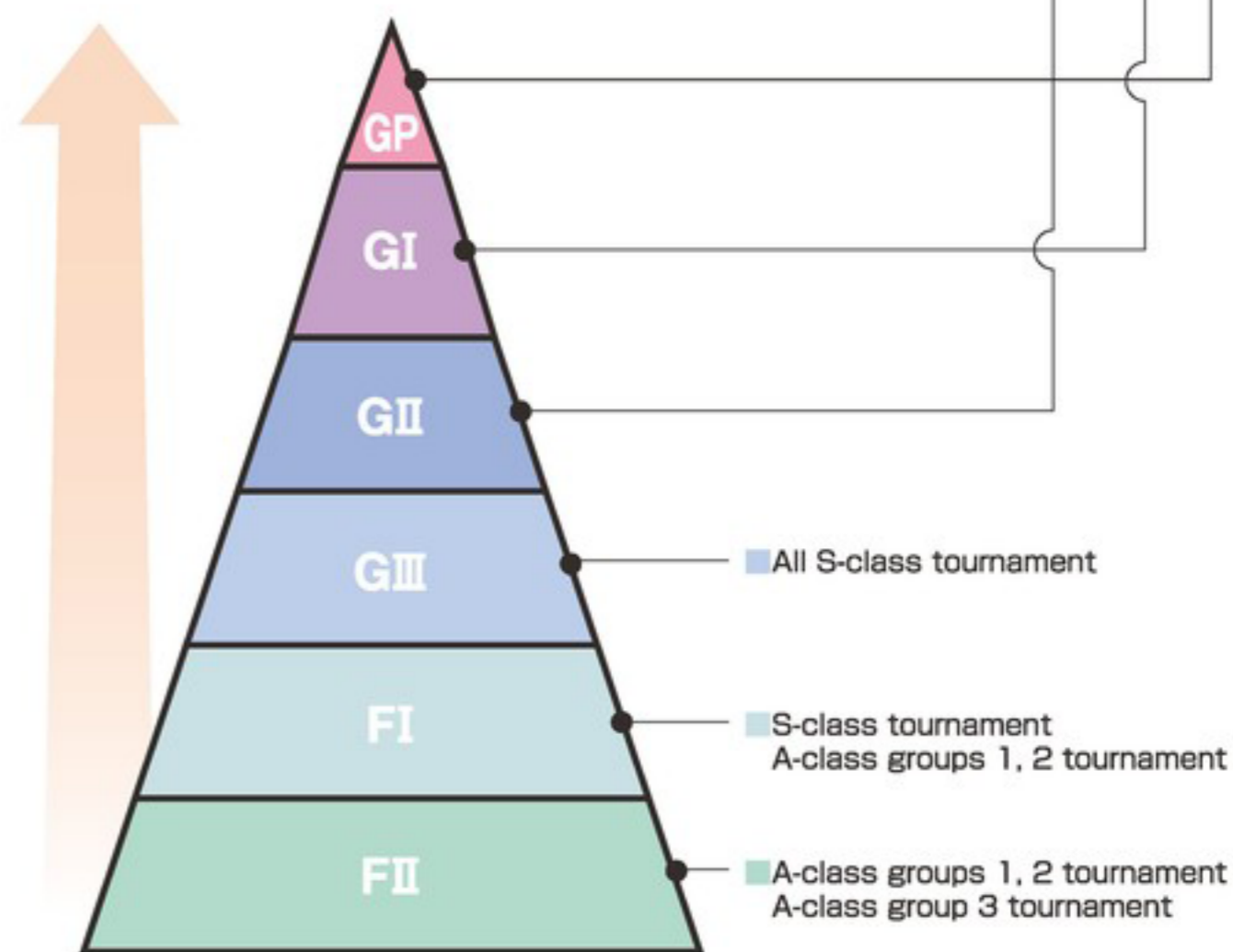
● Japan Championship 6Days ● All Star Keirin 5Days ● Prince Takamatsu Memorial Cup, Prince Tomohito Cup, All Japan Selection, Keirin Festival 4Days

Top S-class riders compete. The GI champions can compete in the GP.

GII

● Kyodo News Service Cup 4Days ● Summer Night Festival 2Days ● Young Grand Prix Single Race

Held for all S-class riders. Riders with top standings receive priority qualification for GI-GII.



Champions

⊗ Winning the GP/GI/GII is the riders' goal!



Koji Yamaguchi (Gifu) 62nd class



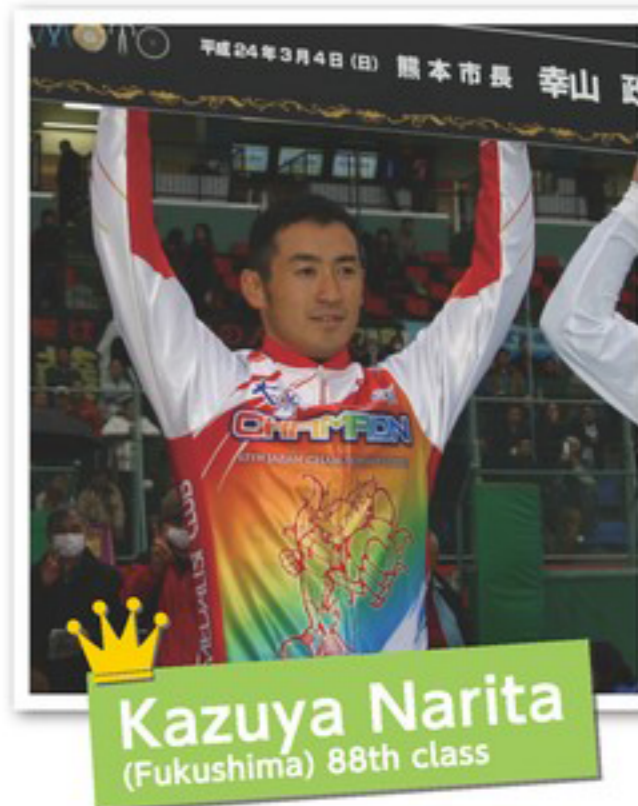
Tomohiro Fukaya
(Aichi) 96th class



Kota Asai
(Mie) 90th class



Toshiaki Fushimi
(Fukushima) 75th class



Kazuya Narita
(Fukushima) 88th class



Yoshihiro Murakami
(Kyoto) 73rd class



Toyoki Takeda
(Ibaraki) 88th class



Tomokazu Sato
(Iwate) 88th class



Kazunari Watanabe
(Fukushima) 88th class

Keirin Q&A



Q When do Keirin races take place?

A. Keirin races take place almost every day!

At the 44 velodromes throughout Japan, even during the New Year and summer O-Bon holidays, there is almost always a keirin race taking place somewhere. Please check race information at <http://www.keirin.jp>



Q Who is the rider coming out in front?

A. The Pacer!!

When the starting gun is fired, one rider cycles out first. He is the pacer, officially called the "pace setter"; not a rider subject to betting, his purpose is to set the pace and act as a wind break. The pacer exits the track when the bell is rung to signal that there is one and a half laps remaining. (The pacer is a local rider.)



Q Why don't the riders pedal at full power from the start?

A. Fighting against the wind!

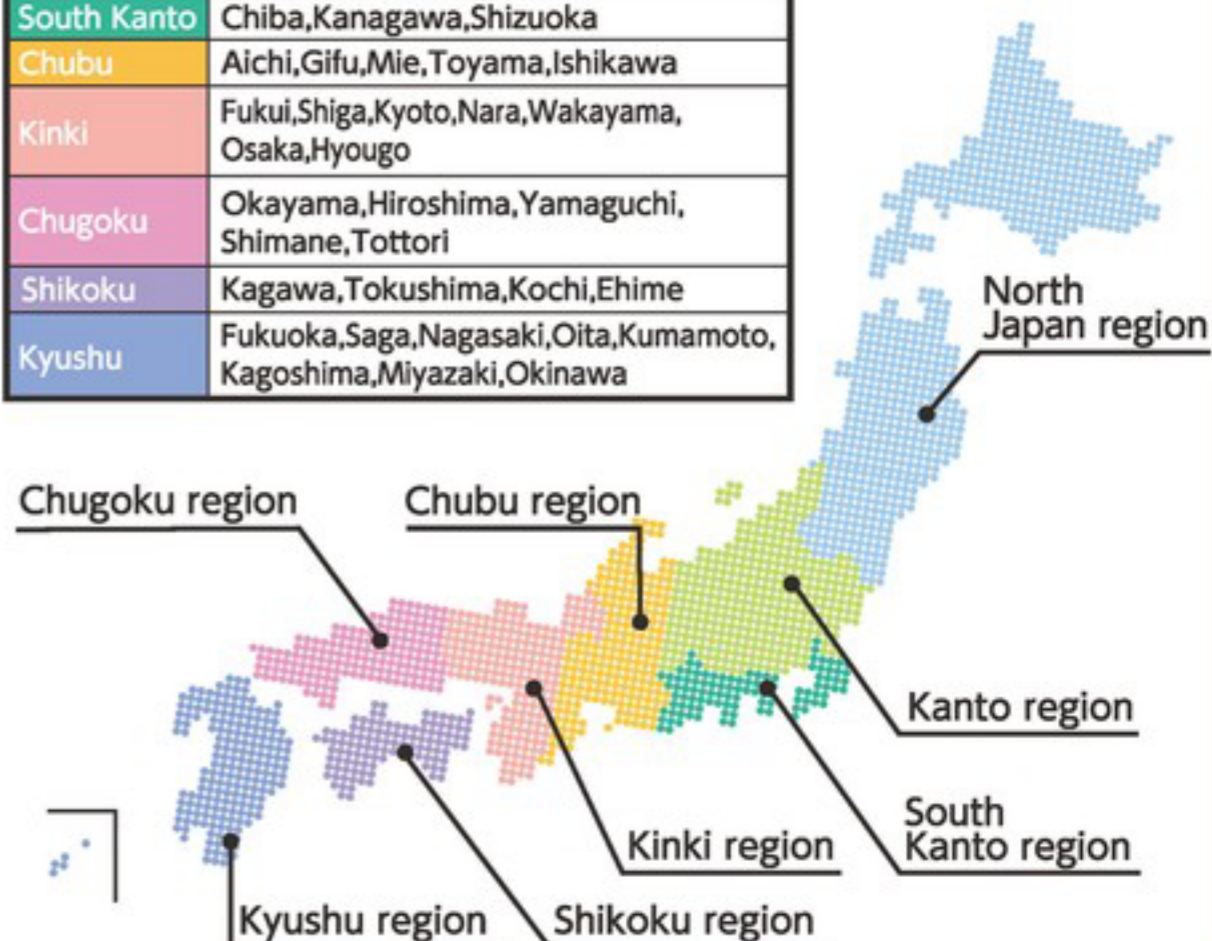
If a rider were to pedal at full power from the start of the race, he would be met by strong wind resistance. That rider would help the riders behind him by acting as a wind break. Although the riders appear to be moving slowly for the first half of the race, they are in fact racing between speeds of 30 to 40 kph.(20-25mph)

A. Forming a line.

With the pacer acting as a wind break, one might think "This is a chance to take the lead" but in fact the wind still poses fearsome opposition. Behind riders who want to take the lead even in the face of the wind (common amongst young riders) will be a group of 3 to 4 riders who will have the fastest speed at the end. This is called a line, usually composed of riders from the same areas, east/west divisions, or Keirin schools.

● Rider's regions and cities.

North Japan	Hokkaido, Aomori, Akita, Iwate, Yamagata, Miyagi, Fukushima
Kanto	Ibaraki, Tochigi, Gunma, Saitama, Tokyo, Niigata, Nagano, Yamanashi
South Kanto	Chiba, Kanagawa, Shizuoka
Chubu	Aichi, Gifu, Mie, Toyama, Ishikawa
Kinki	Fuku, Shiga, Kyoto, Nara, Wakayama, Osaka, Hyogo
Chugoku	Okayama, Hiroshima, Yamaguchi, Shimane, Tottori
Shikoku	Kagawa, Tokushima, Kochi, Ehime
Kyushu	Fukuoka, Saga, Nagasaki, Oita, Kumamoto, Kagoshima, Miyazaki, Okinawa



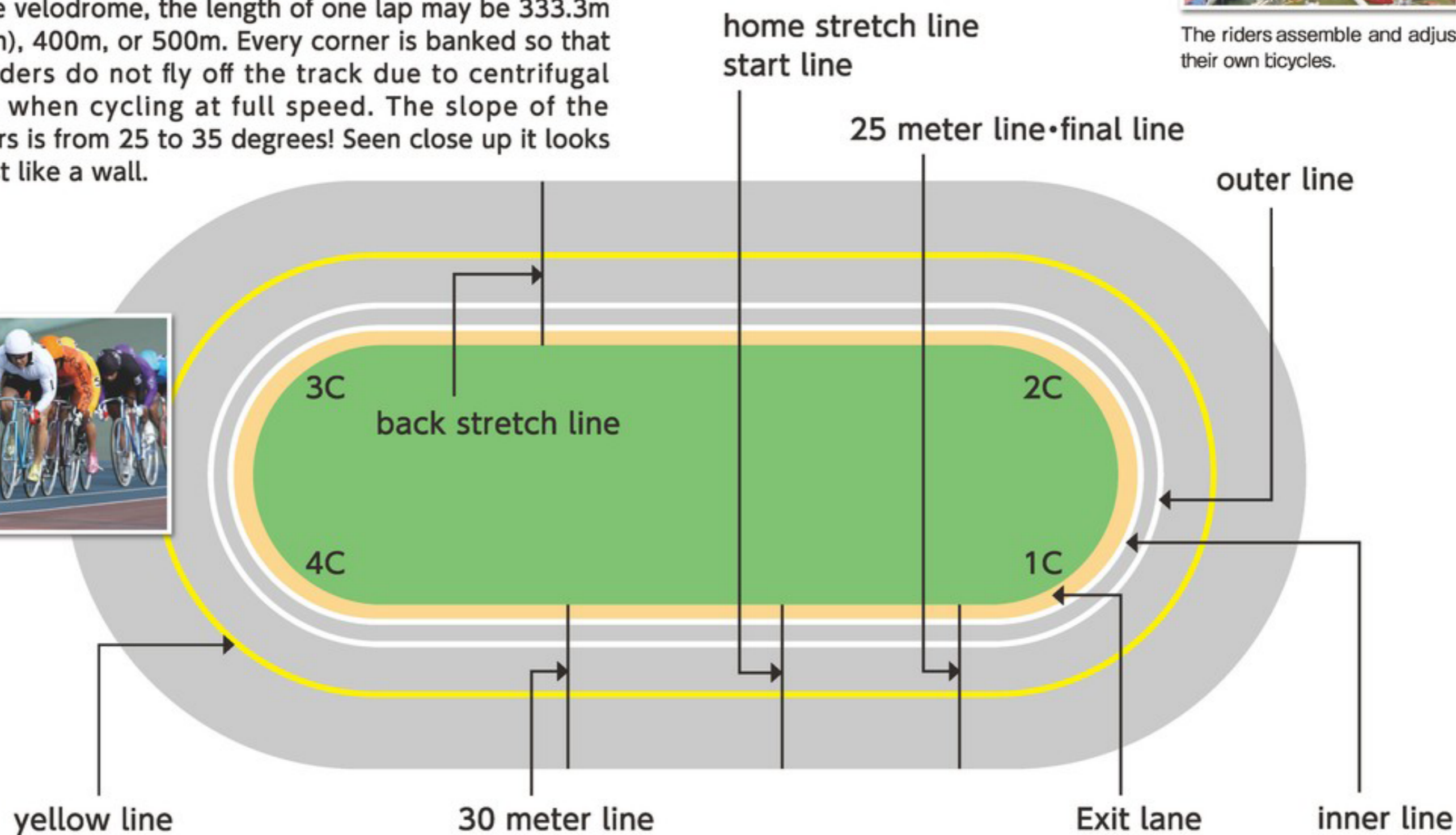
The track the athletes race on

⊗ Because they are pros, they can ride on such a steeply sloping track.

The track the riders race on is called a bank. Depending on the velodrome, the length of one lap may be 333.3m (335m), 400m, or 500m. Every corner is banked so that the riders do not fly off the track due to centrifugal force when cycling at full speed. The slope of the corners is from 25 to 35 degrees! Seen close up it looks almost like a wall.



The riders assemble and adjust their own bicycles.



Not the bicycle you know
pro riders' racing bikes



The bicycles the athletes ride are called "racers." They are made to order for each rider's body type. They weigh around 7 kg (15 lb) and are distinctive for not having brakes. (When riders practice on public roads, they attach brakes and observe traffic regulations.)

No brakes!!

Tire pressure is 9.5

The pedals do not spin freely.



There are various types

⊗ Entrust your dreams to a thrilling race!

Are you the diligent, cautious type?

Or the big-payout dream chaser type?

Keirin betting tickets are called "shaken" (bicycle betting tickets). There are now various types of tickets available. The 7 types of betting are as below.

Example At a certain race

1st Place	Bracket
No.5	4

2nd Place	Bracket
No.3	3

3rd Place	Bracket
No.2	2

the winning tickets of each type are as below.

	7-rider line up	9-rider line up	See P3
Bracket Quinella (2-Waku-Fuku) 2 brackets for 1st and 2nd in either order	No sale	Probability 1/18	3 - 4
Bracket Perfecta (2-Waku-Tan) 2 brackets for 1st and 2nd in exact order	No sale	Probability 1/33	4 → 3
Quinella (2-Sha-Fuku) 2 Numbers for 1st and 2nd in either order	Probability 1/21	Probability 1/36	3 - 5
Perfecta (2-Sha-Tan) 2 Numbers for 1st and 2nd in exact order	Probability 1/42	Probability 1/72	5 → 3
Trio (3-Ren-Fuku) 3 Numbers for 1st, 2nd, 3rd in any order	Probability 1/35	Probability 1/84	2 - 3 - 5
Trifecta (3-Ren-Tan) 3 Numbers for 1st, 2nd, 3rd in exact order	Probability 1/210	Probability 1/504	5 → 3 → 2
Quinella Place (Wide) 2 Numbers for 1st, 2nd, or 3rd in any order	Probability 3/21	Probability 3/36	3 - 5 2 - 5 2 - 3

Fundamentally, the higher the probability is the lower the pay-out, and the lower the probability is the higher the pay-out on a winning bet.

Single entry and Multiple entry

With single entry, you must predict in exact order.

With multiple entry, you can win even if the order is incorrect.

[Example] <1st place> No.7 <2nd place> No.2

[Perfecta(2-Sya-tan)] 7 → 2 **Win!** (2 - 7 would be loose)

[Quinella(2-Sya-Fuku)] 2 - 7 **Win!**

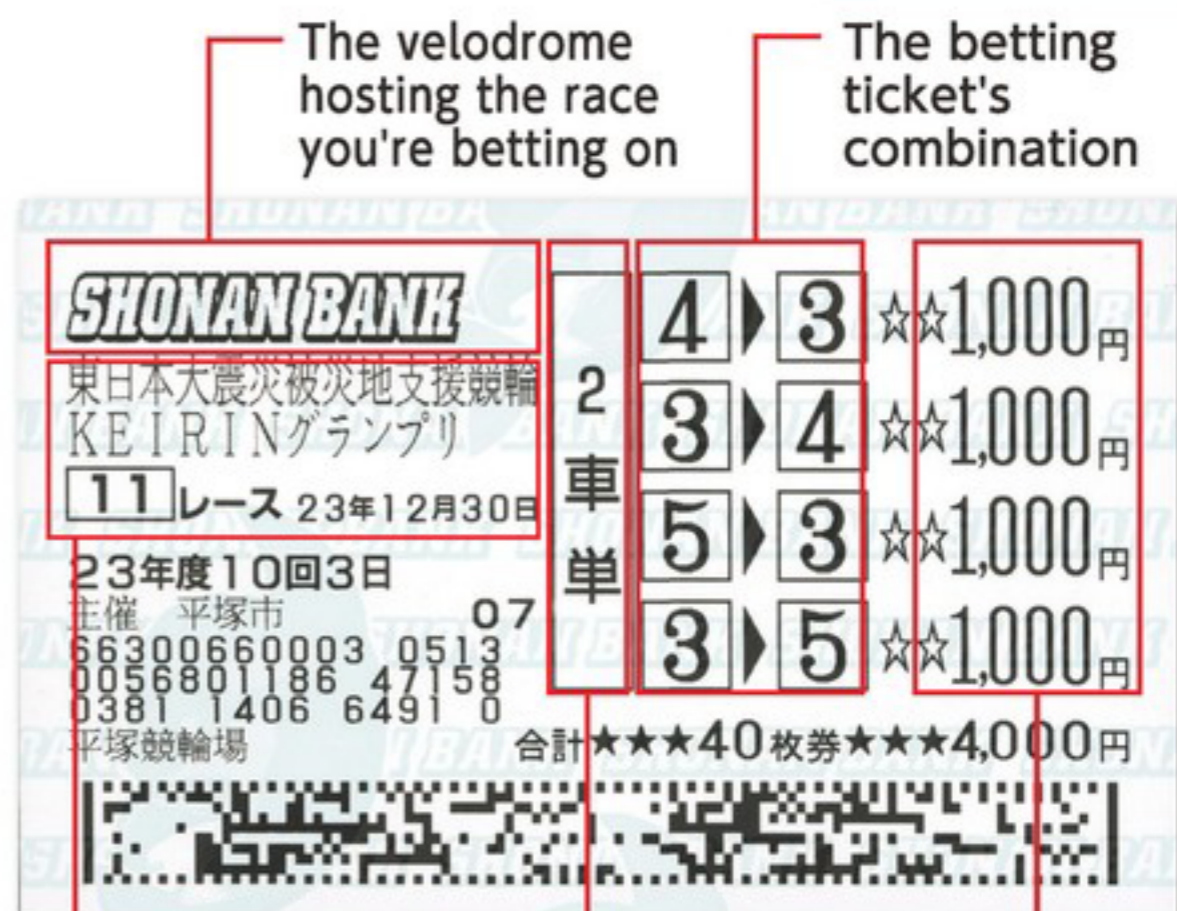
*"Wide" means that you earn a win if the two riders you choose place anywhere in the top three.



of betting tickets!

⊗ How to read a betting ticket

See p. 21 for instructions on buying betting tickets

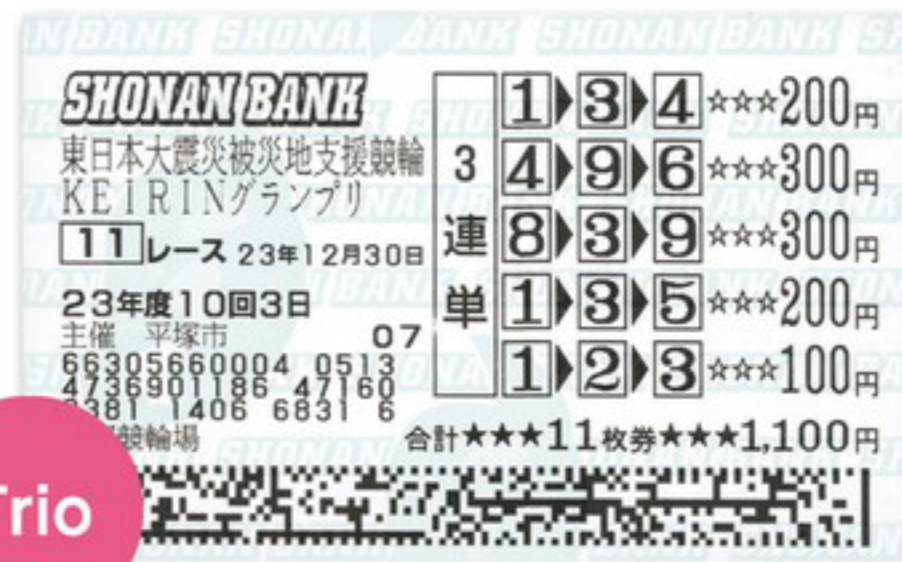


The race's title, number, and date

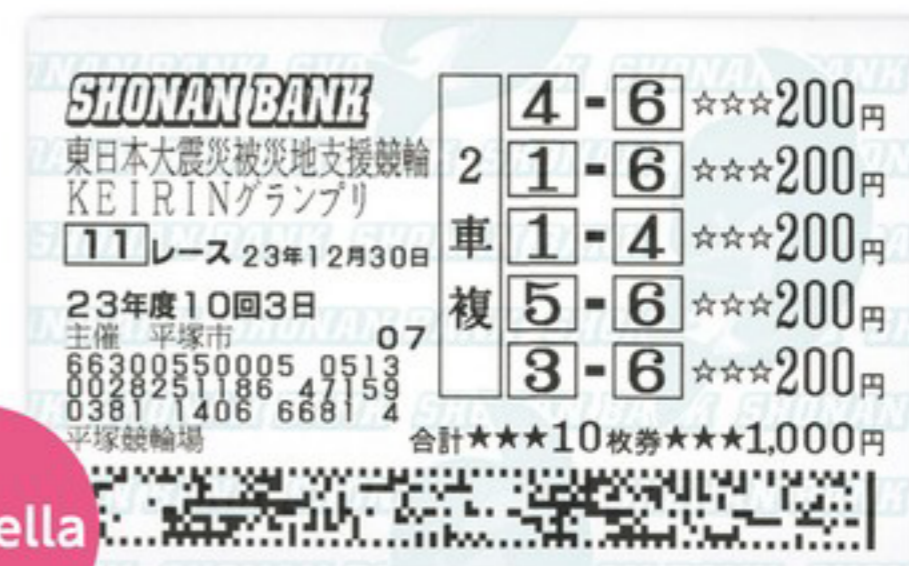
Ticket type

Bet amount

⊗ Betting ticket examples



Trio



Quinella

※It is illegal for those underage to purchase betting tickets.

Let's learn how to

read the odds!

⊗ Odds are about predicting dividends!

If you purchase a betting ticket for this race, how much will you receive if you win? That is what odds are.

1 立川		2 10R		3 2車単オッズ		4 締切 8分前				
1 高木 隆弘	2 72.9	1 2 72.9	3 47.2	1 3 72.9	2 47.2	1 4 72.9	2 47.2	1 5 72.9	2 47.2	
2 72.9	3 47.2	3 47.2	4 57.7	2 47.2	3 57.7	2 47.2	3 57.7	2 47.2	3 57.7	
3 47.2	4 57.7	4 57.7	5 78.9	3 57.7	4 78.9	3 57.7	4 78.9	3 57.7	4 78.9	
4 57.7	5 78.9	5 78.9	6 96.1	4 78.9	5 96.1	4 78.9	5 96.1	4 78.9	5 96.1	
5 78.9	6 96.1	6 96.1	7 83.3	5 96.1	6 83.3	5 96.1	6 83.3	5 96.1	6 83.3	
6 96.1	7 83.3	7 83.3	8 26.0	6 83.3	7 26.0	6 83.3	7 26.0	6 83.3	7 26.0	
7 83.3	8 26.0	8 26.0	9 25.7	7 26.0	8 26.0	7 26.0	8 26.0	7 26.0	8 26.0	
8 26.0	9 25.7	9 25.7		8 26.0	9 25.7	8 26.0	9 25.7	8 26.0	9 25.7	
9 25.7				9 25.7		9 25.7		9 25.7		
6 高木 隆弘				7 高木 隆弘		8 小橋 正樹		9 太田 真一		合計
1 72.9	2 47.2	3 57.7	4 78.9	5 96.1	6 83.3	7 26.0	8 26.0	9 25.7	24113	6
2 47.2	3 57.7	4 78.9	5 96.1	6 83.3	7 26.0	8 26.0	9 25.7		返還	0
3 57.7	4 78.9	5 96.1	6 83.3	7 26.0	8 26.0	9 25.7			差引	24113
4 78.9	5 96.1	6 83.3	7 26.0	8 26.0	9 25.7					8
5 96.1	6 83.3	7 26.0	8 26.0	9 25.7						
6 83.3	7 26.0	8 26.0	9 25.7							
7 26.0	8 26.0	9 25.7								
8 26.0	9 25.7									
9 25.7										

- The name of the velodrome hosting the race.
- Race number.
- The types of betting tickets and their odds are displayed.
- Closing time display for betting.
- The odds of each grouping, from rider 1 on, are displayed.
- The total number of vouchers, with 1 voucher valued at ¥100.
- Returned vouchers.
- Total vouchers, with the returns subtracted from the total purchased. This affects the odds.

回日市	1R	払戻金
1着	5	秋山 道誠 (香川)
2着	7	福島 一雄 (福岡)
3着	3	北谷 真二 (香川)
2分単	4 = 5	710円
3分単	5 = 7	990円
4分単	3 = 5	500円
5分単	5 = 7	340円
6分単	3 = 5	190円
7分単	3 = 7	450円



⊗ Get in the know here!

From well-known facts to specialized tips. Is a lot of information a good thing?

■ Race entry sheet

Basic data provided by the promoter, including riders' names, bracket numbers, gear numbers, race points and so on are found on the members' charts. These are distributed free of charge at each velodrome.



■ Sports newspaper

Sports newspapers are familiar and easily accessible. Predictions and rider entries for the day are printed. ¥100 - ¥130.

■ Specialty paper

Sold at velodromes and at nearby station kiosks and convenience stores. Detailed information for the day's race is printed. ¥500.



■ Tipsters

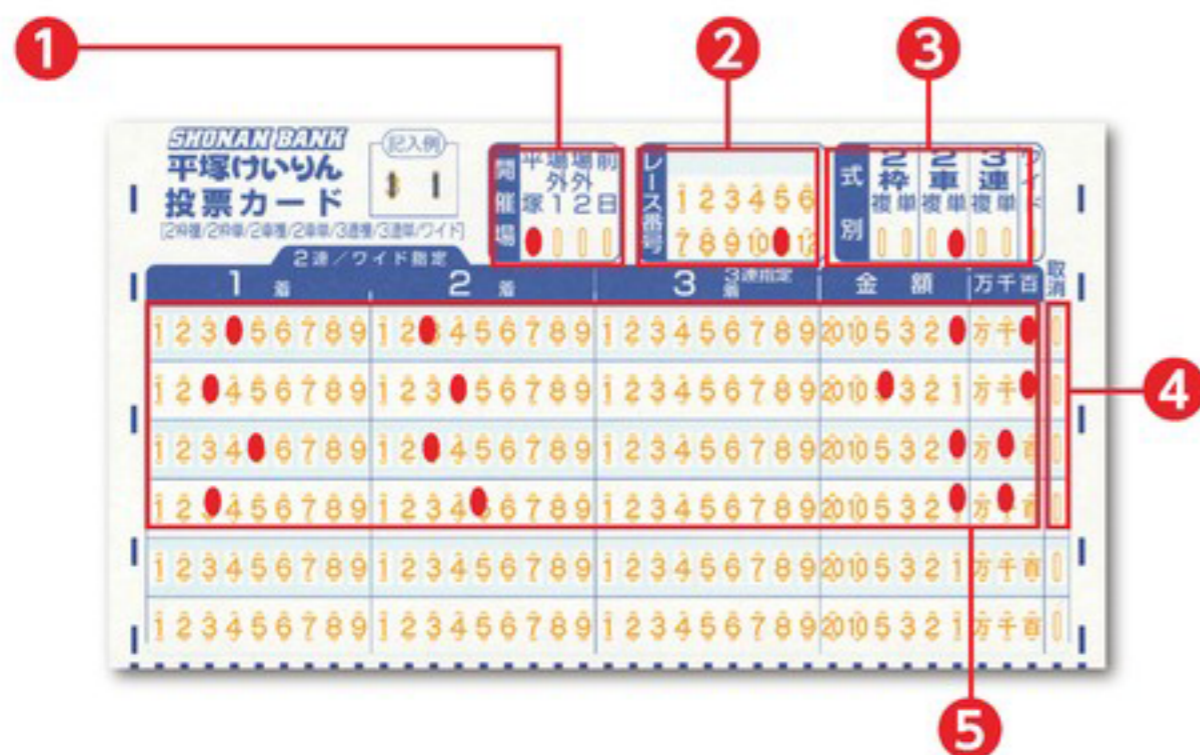
They'll tell you at the velodrome what the hot tips for each race are. As a rule, one race is ¥100 and all races are ¥500.



Filling out a mark sheet

⊗ When buying betting tickets, start from the mark sheet.

All you need to buy a betting ticket is to fill out the necessary information on the mark sheet and bring it to the teller window.



- ① Fill in off-track purchases or previous-day purchases.
- ② Fill in the race number you're betting for.
- ③ Fill in the type of bet you wish to buy. (in this case, Perfecta(2-Sya-tan))
- ④ If you make a mistake, you can cancel it by checking in this box.
- ⑤ Fill in the rider number you predict and bet amount.



Nagashi

With "Nagashi" (a combination bet on one ticket), you choose one point for one or two places and several points for the remaining places. Then you can place a bet on that combination.

Box

With "Box," you can place a bet on the combination of all the points you have chosen.



Trio 1st place Nagashi



Trio Box

is also important!

⊗ You can purchase betting tickets outside of the velodrome, too.

You can purchase betting tickets even if there's no nearby velodrome or if you are too busy to attend.

Off-track betting facilities

There are over 60 off-track betting facilities across Japan. Find the nearest to you! (see p. 33)



Betting by phone

Betting by phone is a system set up to allow people to place bets from home, even when they are not able to attend the races. The sign-up procedures take place in accordance with the regulations of the Japan Keirin Association. After signing up, you can place bets on races being held at velodromes across the country.

Internet

Betting by phone members can also use our convenient Internet betting system. With Internet betting, you can view odds and race entries and place bets quickly from your home computer, smartphone or mobile phone.

Internet betting through computer, smartphone, or mobile phone

Quick! Easy! Convenient!



Cycle telephone center

reception time weekday 9:00~20:00 / weekends & National Holidays 9:00~19:00

toll free



0120-319634



What's Dokanto auto-betting?

Dokanto! is a betting ticket that allows you to win on multiple races. It can only be purchased via the internet. Automated choice makes predictions unnecessary, giving even novices the feeling of "drawing lots." Dokanto! can easily be purchased by computer, smartphone or mobile phone. For a minimum bet of ¥200, winnings can be up to ¥1.2 billion! Find out how easy it is yourself, and give it a try!

- * It is illegal for minors to purchase betting tickets.
- * It may be necessary to file a tax return on your winnings.

Betting method 1 Dokanto 7

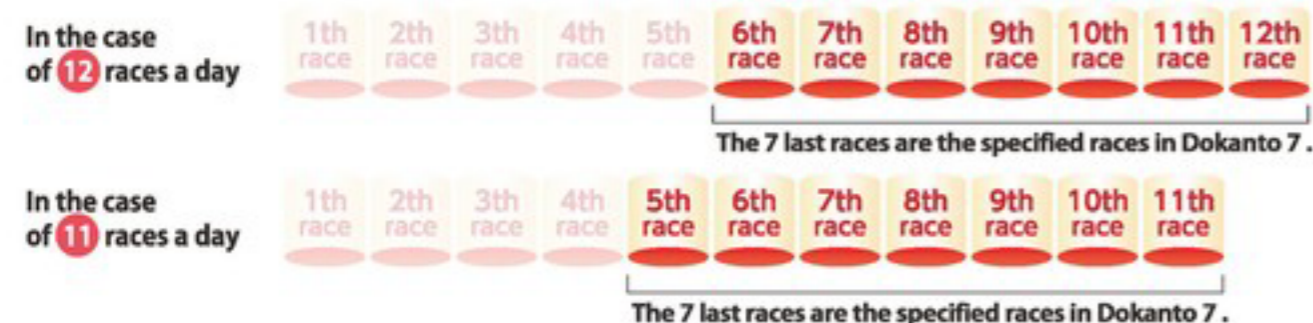
"Dokanto Seven" 7 fold win betting

Automated quick-picks make predictions unnecessary. **Correctly choosing 1st-place riders in all 7 second-half races.** (Probability: approximately 1 in 4.78 million)

1 If you selected all the 1st place riders in the specified races, you win!



2 The 7 second-half races on the given day are the specified races.



Betting method 2 Dokanto 4two

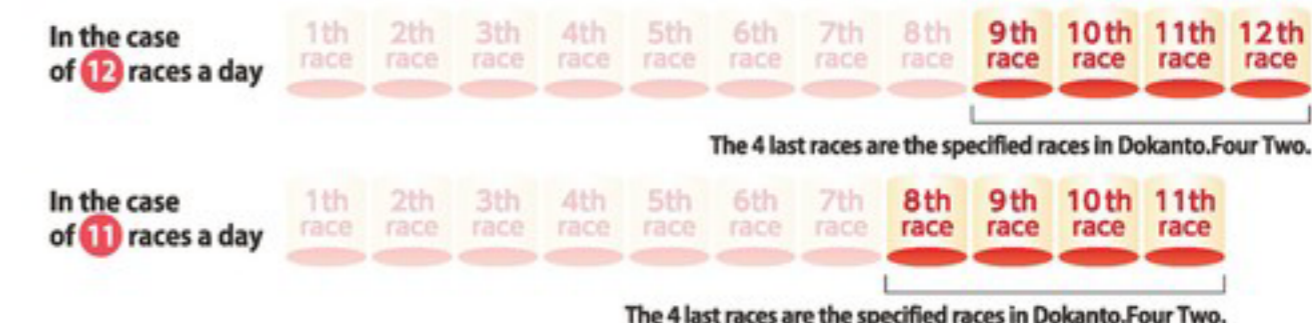
"Dokanto Four Two" 4 fold Qinella betting

Automated quick-picks make predictions unnecessary. **Correctly choosing all the 1st- and 2nd-place riders (in any order) in the 4 second-half races.** (Probability: approximately 1 in 1.68 million)

1 If you selected all the 1st and 2nd place riders (in any order) in the specified races, you win!

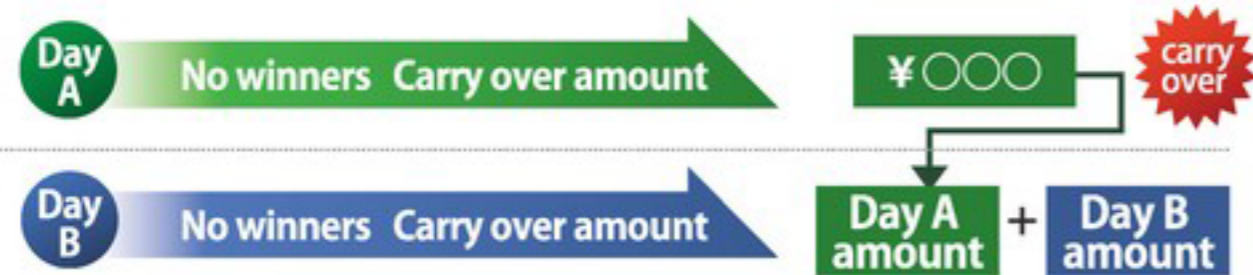


2 The 4 second-half races on the given day are the specified races.



How can up to ¥1,200 million carry over?

If there are no winning bets on a given day, the amount carries over to the next day (the tickets sold the next day). The payout can be as much as ¥1,200 million.



Day C Payout Up to **1,200,000,000!!**

Purchase via the Internet

Currently the 4 sites (URL) below are the websites where this can be purchased.

- KEIRIN. JP (<http://keirin.jp>)
- K Dreams (<http://www.kdreams.jp>)
- Chariloto (<http://www.chariloto.com>)
- Odds park (<http://www.oddsark.com/loto/>)

* Multiple-race betting tickets include not only the types introduced here, but those sold individually at each velodrome. For details, visit keirin.jp.

This is what to look

Since July of 2012, Girl's Keirin races have been taking place. Girl's Keirin has been a part of world Olympic event in the 2012 London Summer Olympics.

Uniform



Racers wear one-piece racing shorts and a bolero-style uniform.

Bicycle



Like the bicycles used in Olympic events and world competitions, carbon monocoque frames, disk wheels and baton wheels are used. (Depending on weather conditions, the spoked wheels also used by male riders are sometimes used as well.)

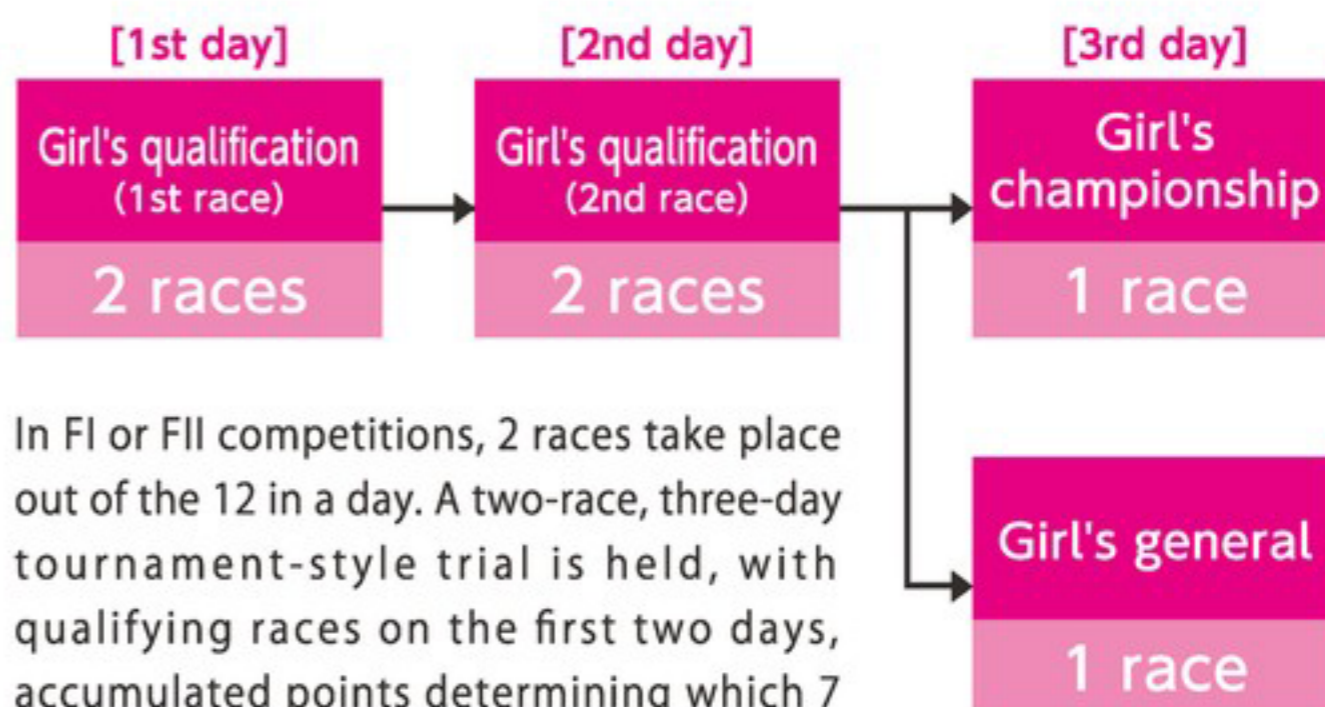
out for in Girl's Keirin!

The first group of 33 riders offer an exciting championships since 2002, and became an official It is now extremely popular.

How it's conducted

Established Programs (Elimination-style tournament)

Points are given according to standings in qualification races: the total points over a 2-day period determine the 7 riders in the final race.



In FI or FII competitions, 2 races take place out of the 12 in a day. A two-race, three-day tournament-style trial is held, with qualifying races on the first two days, accumulated points determining which 7 riders will enter the race on the final day.

*Girl's Keirin is a 7-rider lineup.



*In accordance with the rules, the event is known as a "fixed-lead race (international)." Women's keirin follows competition rules which enhance its sporting character, distinguishing it from the competitive (original) keirin featuring male riders.

<http://www.girlskeirin.com>

Get to know Girl's Keirin!



Girl's Keirin is a 7-rider lineup over a race of roughly 1,500m-1,700m, with other distinctive features as well.

⚡ A real sport with simple rules.

The international rules make it clear that it is a form of sport: for this reason, behavior that would not disqualify a male rider will disqualify a female rider.



⚡ The pacer's starting point for the approach run.

The pacer starts out approximately half a lap behind the riders. When the pacer reaches the start line, the starting gun is fired and the riders begin to move.



⚡ Merging with the pacer is prohibited.

If a rider passes the pacer's back wheel while the pacer is leading, or comes abreast of the pacer, she will be disqualified. *excluding momentary positioning.



⚡ The pacer's lead exit is fixed.

The pacer will exit when reaching a determined area, but because of the "pacer merge prohibition" rule, riders cannot pass the pacer while he or she is on the track.

Determined exit area

Lap length 333.3m	=	Back stretch with 1 and a half laps remaining (Back straight line lane)
Lap length 400m	=	Home stretch with 1 lap remaining (home straight line lane)
Lap length 500m	=	Home stretch with 1 lap remaining (home straight line lane)

Keirin!

⊙ Introduction of noteworthy riders



■ Kanako Kase (Niigata)

Born May 31st 1980
Graduation Memorial Race winner
Switched from triathlon



■ Yukari Nakamura (Tokyo)

Born March 9th 1981
Number 1 attendance record at Keirin school
Former elementary school teacher



■ Ryoko Nakagawa (Niigata)

Born May 29th 1984
Number 3 attendance record at Keirin school
Sister of Seiichiro Nakagawa (Kumamoto)
Stage 85



■ Yukari Watanabe (Yamanashi)

Born April 28th 1981
Salt Lake City and Torino Winter Olympics
500m speed skating representative



■ Yuria Gokan (Tokyo)

Born April 2nd 1992
Daughter of Keirin champion Shinichi Gokan
(Tokyo) Stage 65



■ Miyoko Takamatsu (Kanagawa)

Born May 9th 1962
Oldest rider in the women's 1st league
Former elementary school teacher



■ Maimi Tanaka (Niigata)

Born August 11th 1982
Bicycle club team
Former model from "SPIRITS"

Velodromes across the country

Visit KEIRIN.JP for detailed information.

Kanto

- 4 Yahiko Velodrome**
Niigata-ken Nishikanbara-gun Yahiko-mura Ooaza Yahiko 2621
- 5 Maebashi Velodrome**
Gunma-ken Maebashi-shi Iwagami-machi 1-2-1
- 6 Utsunomiya Velodrome**
Tochigi-ken Utsunomiya-shi Higashitomatsuri 1-2-7
- 7 Toride Velodrome**
Ibaraki-ken Toride-shi Hakusan 6-2-8
- 8 Omiya Velodrome**
Saitama-ken Saitama-shi Omiya-ku Takahana-cho 4 Omiya koen-nai
- 9 Seibuen Velodrome**
Saitama-ken Tokorozawa-shi Arahata1215
- 10 Tachikawa Velodrome**
Tokyo-to Tachikawa-shi Akebono-cho 3-32-5
- 11 Keiokaku Velodrome**
Tokyo-to Chofu-shi Tamagawa 4-31-1

North Japan

- 1 Hakodate Velodrome**
Hokkaido Hakodate-shi Kanahori-cho 10-8
- 2 Aomori Velodrome**
Aomori-ken Aomori-shi Ooaza shinjyo aza Hiraoka 1-1
- 3 Iwakitaira Velodrome**
Fukushima-ken Iwaki-shi Tairayagawase aza nishisaku 1

South Kanto

- 12 Matsudo Velodrome**
Chiba-ken Matsudo-shi Kamihongo 594
- 13 Chiba Velodrome**
Chiba-ken Chiba-shi Chuo-ku Benten 4-1-1
- 14 Kawasaki Velodrome**
Kanagawa-ken Kawasaki-shi Kawasaki-ku Fujimi 2-1-6
- 15 Hiratsuka Velodrome**
Kanagawa-ken Hiratsuka-shi Kuryozutsumi 5-1
- 16 Odawara Velodrome**
Kanagawa-ken Odawara-shi Shiroyama 4-10-1
- 17 Ito Onsen Velodrome**
Shizuoka-ken Ito-shi Oka 1280
- 18 Shizuoka Velodrome**
Shizuoka-ken Shizuoka-shi Suruga-ku Oshika 2-9-1

Chugoku

- 32 **Tamano Velodrome**
Okayama-ken Tamano-shi
Chikko 5-18-1
- 33 **Hiroshima Velodrome**
Hiroshima-ken Hiroshima-shi
Minami-ku Ujinakaigan 3-6-40
- 34 **Houfu Velodrome**
Yamaguchi-ken Houfu-shi
Kokubunji-cho 8-2

Shikoku

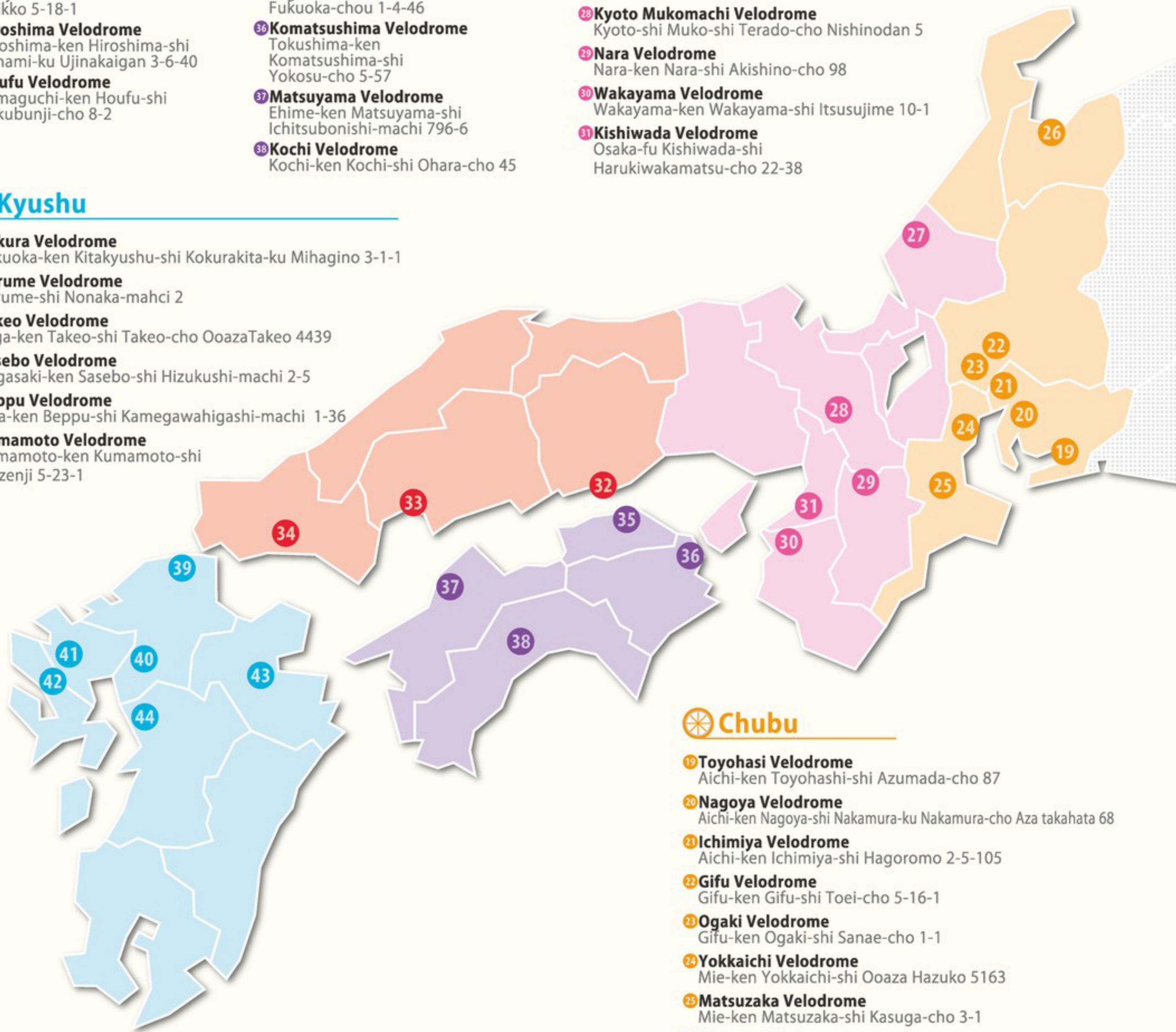
- 35 **Takamatsu Velodrome**
Kagawa-ken Takamatsu-shi
Fukuoka-chou 1-4-46
- 36 **Komatsushima Velodrome**
Tokushima-ken
Komatsushima-shi
Yokosu-cho 5-57
- 37 **Matsuyama Velodrome**
Ehime-ken Matsuyama-shi
Ichitsubonishi-machi 796-6
- 38 **Kochi Velodrome**
Kochi-ken Kochi-shi Ohara-cho 45

Kinki

- 27 **Fukui Velodrome**
Fukui-ken Fukui-shi Akari-cho 2-65
- 28 **Kyoto Mukomachi Velodrome**
Kyoto-shi Muko-shi Terado-cho Nishinodan 5
- 29 **Nara Velodrome**
Nara-ken Nara-shi Akishino-cho 98
- 30 **Wakayama Velodrome**
Wakayama-ken Wakayama-shi Itsusujime 10-1
- 31 **Kishiwada Velodrome**
Osaka-fu Kishiwada-shi
Harukiwakamatsu-cho 22-38

Kyushu

- 39 **Kokura Velodrome**
Fukuoka-ken Kitakyushu-shi Kokurakita-ku Mihagino 3-1-1
- 40 **Kurume Velodrome**
Kurume-shi Nonaka-mahci 2
- 41 **Takeo Velodrome**
Saga-ken Takeo-shi Takeo-cho OoazaTakeo 4439
- 42 **Sasebo Velodrome**
Nagasaki-ken Sasebo-shi Hizukushi-machi 2-5
- 43 **Beppu Velodrome**
Oita-ken Beppu-shi Kamegawahigashi-machi 1-36
- 44 **Kumamoto Velodrome**
Kumamoto-ken Kumamoto-shi
Suizenji 5-23-1



Chubu

- 19 **Toyohashi Velodrome**
Aichi-ken Toyohashi-shi Azumada-cho 87
- 20 **Nagoya Velodrome**
Aichi-ken Nagoya-shi Nakamura-ku Nakamura-cho Aza takahata 68
- 21 **Ichimiya Velodrome**
Aichi-ken Ichimiya-shi Hadoromo 2-5-105
- 22 **Gifu Velodrome**
Gifu-ken Gifu-shi Toei-cho 5-16-1
- 23 **Ogaki Velodrome**
Gifu-ken Ogaki-shi Sanae-cho 1-1
- 24 **Yokkaichi Velodrome**
Mie-ken Yokkaichi-shi Ooaza Hazuko 5163
- 25 **Matsuzaka Velodrome**
Mie-ken Matsuzaka-shi Kasuga-cho 3-1
- 26 **Toyama Velodrome**
Toyama-ken Toyama-shi Iwasekeda-machi 8-2

Off-track betting facilities

North Japan

1. Satellite Asahikawa Hokkaido Asahikawa-shi
2. Satellite Ishikari Hokkaido Ishikari-shi
3. Satellite Sapporo Hokkaido Sapporo
4. Satellite Matsukaze Hokkaido Hakodate-shi
5. Aomori Maeuri Service Center Aomori-Ken Aomori-shi
6. Satellite Rokunohe Aomori-ken Kamikita-gun Rokunohe-machi
7. Fujisakijogai Aomori-ken Minamitsugaru-gun Fujisaki-machi
8. Satellite Oga Akita-ken Oga-shi
9. Satellite Rokugo Akita-ken Senboku-gun Misato-cho
10. Satellite Ishidoriya Iwate-ken Hanamaki-shi
11. Satellite Taiwa Miyagi-ken Kurokawa-gun Taiwa-cho
12. Satellite Miyagi Miyagi-ken Shibata-gun Murata-machi
13. Satellite Kashima Fukushima-ken Minamisoma-shi
14. Satellite Fukushima Fukushima-ken Fukushima-shi
15. Satellite Aizu Fukushima-ken Kitakata-shi
16. Satellite Adataru Fukushima-ken Nihonmatsu-shi
17. Koriyamajogai Fukushima-ken Koriyama-shi

Kanto

18. Satellite Agano Niigata-ken Agano-shi
19. Satellite Niigata Niigata-ken Niigata-shi
20. Satellite Chuuetsu Niigata-ken Nagaoka-shi
21. Satellite Myoko Niigata-ken Myoko-shi
22. Maebashikeirin Tonenishi Maeuri Service Center Gunma-ken Maebashi-shi
23. Windome Tatebayashi (Tatebayashijogai) Gunma-ken Tatebayashi-shi
24. Satellite Mito Ibaraki-ken Higashiibaraki-gun Shiro-sato-machi

25. Satellite ShiosaiKashima Ibaraki-Ken Kashima-shi
26. La Pista Shinbashi (Members only) Tokyo-to Minato-ku
27. Satellite Futaba Yamanashi-ken Kai-shi

South Kanto

28. Satellite Narita Chiba-ken Sanbu-gun Shibayama-machi
29. Satellite Funabashi Chiba-ken Funabashi-shi
30. Satellite Ichihara Chiba-ken Ichihara-shi
31. Satellite Kamogawa Chiba-ken Kamogawa-shi
32. Satellite Yokohama (Members only) Kanagawa-ken Yokohama-shi

Chubu

33. Satellite Nagoya (Members only) Aichi Nagoya-shi
34. Kawagoejogai Mie-ken Mie-gun Kawagoe-cho

Kinki

35. Satellite Osaka (Members only) Osaka-fu Osaka-shi Chuo-ku
36. Satellite Hanshin Hyogo-ken Miki-shi

Chugoku

37. Satellite Tsuyama Okayama-ken Tsuyama-shi
38. Satellite Kasaoka Okayama-ken Kasaoka-shi
39. Satellite Sanin Shimane-ken Matsue-shi

40. Satellite Sanyo Hiroshima-ken Mihara-shi
41. Houfuekimae Service Center Yamaguchi-ken Houfu-shi
42. Satellite Ube Yamaguchi-ken Ube-shi

Shikoku

43. Satellite Kanonji Kagawa-ken Kanonji-shi
44. Kokudomaeuri Service Center Kagawa-ken Kanonji-shi
45. Satellite Kamojima Tokushima-ken Yoshinogawa-shi
46. Satellite Seiyo Ehime-ken Seiyo-shi
47. Nibanchoaeuri Service Center Ehime-ken Matsuyama-shi

48. Satellite Komatsu Ehime-ken Saijo-shi
49. Satellite Nankoku Kochi-ken Nankoku-shi
50. Satellite Yasuda Kochi-ken Aki-gun Yasuda-cho

Kyushu

51. Hi-Vision Theater Moji Fukuoka-ken Kitakyushu-shi
52. Satellite Wakamatsu Fukuoka-ken Kitakyushu-shi
53. Satellite Kitakyushu Fukuoka-ken Izuka-shi
54. Satellite Kurume Fukuoka-ken Kurume-shi
55. Satellite Usa Oita-ken Usa-shi
56. Satellite Takeo Saga-ken Takeo-shi
57. Satellite Nagasaki Nagasaki-ken Isahaya-shi
58. Satellite Kadogawa Miyazaki-ken Higashiusuki-gun Kadogawa-cho
59. Satellite Miyazaki Miyazaki-ken Miyazaki-shi
60. Satellite Mimata Miyazaki-ken Kitamorokata-gun Mimata-cho
61. Satellite Mizobe Kagoshima-ken Kirishima-shi
62. Satellite Akune Kagoshima-ken Akune-shi
63. Satellite Satsumasendai Kagoshima-ken Satsumasendai-shi
64. Satellite Kagoshima Kagoshima-ken Kagoshima-shi
65. Satellite Kimotsuki Kagoshima-ken Kimotsuki-gun Kimotsuki-cho

A sport Japan taught the world

Keirin riders on the world stage: Koichi Nakano is famous for his 10 successive sprint wins (1977-1986) at the World Cycling Championships. Professional riders have also been able to participate in the Olympics in pro/am open cycle racing since the 1996 Summer Olympics in Atlanta.

1996

Atlanta Summer Olympics

 Takanobu Jumonji (Ibaraki 75th class)

1km time trial bronze Medal



2004

Athens Summer Olympics

Tomohiro Nagatsuka (Ibaraki 81st class)

 Toshiaki Fushimi (Fukushima 75th class)

Masaki Inoue (Nagasaki 86th class)

Team sprint silver medal



2008

Beijing Summer Olympics

 Kiyofumi Nagai (Gifu 88th class)

Keirin bronze medal



A sport Japan
taught the world



<http://www.keirin.jp>

Issued by JKA